

SUEZ ENVIRONNEMENT

TOUR CB21
16, PLACE DE L'IRIS
92040 PARIS LA DEFENSE CEDEX
TEL +33 (0)1 58 81 23 23
FAX +33 (0)1 58 81 25 09
WWW.SUEZ-ENVIRONNEMENT.COM



PRESS RELEASE

27th May 2013

SUEZ ENVIRONNEMENT HAS JOINED FORCES WITH AL-JIHAD FOR COMMERCE AND CONTRACTING (JCC) FOR SAIDA "WASTE MOUNTAIN" REHABILITATION

SUEZ ENVIRONNEMENT has joined forces with Al-Jihad for Commerce and Contracting (JCC) with an objective to combine global environmental knowledge and firm roots in local communities, to shape the future resource recovery in Lebanon.

The dump site of Saida, more than a million of cubic meters of Waste, is located on the coast line of the Mediterranean Sea at 1 km from the historical city and seaport. The dump site is an environmental burden for the inhabitants and the municipality. For almost 40 years, wastes have piled up to form a "Mountain" on the Med sea.

The Lebanese Government has requested the United Nations Development Programme to be the manager of the 25 MUSD Saida Dump Site Rehabilitation Contract. The works and services are expected to be completed by end of 2015.

JCC and SUEZ ENVIRONNEMENT wish to promote a model of waste management based on the social responsibility of everyone : the Saida dump site will turn to become a public park, creating recreation spaces for the residents with a public celebration theatre. The vegetation and Landscaping will be inspired on Saida culture and history (see attached pictures).

SUEZ ENVIRONNEMENT will put at the services of JCC all its available know-how via the implementation of a complete on site solution and the mobilization of its team of experts from many of its Business Units :

- SITA, an international leader in soil remediation and aeration operations, together with its BU SITA CZ
- SAFEGE, with its sustainable engineering solutions and programme management
- CIRSEE, SE main Centre of Research and Development with more than 120 researchers
- NOSE, that proposes a large range of tools and services to address the odour issues

The new sanitary landfill will be located at the same place as the existing dump site allowing autonomous monitoring and management of biogases and leachates. A treatment plant will be deployed on site in order to sort excavated waste based on its fraction size and density. The appropriate health and safety management will be as capital to JCC and SUEZ ENVIRONNEMENT as operational excellence.

SUEZ ENVIRONNEMENT

Natural resources are not infinite. Each day, SUEZ ENVIRONNEMENT (Paris: SEV, Brussels: SEVB) and its subsidiaries deal with the challenge of protecting resources by providing innovative solutions to industry and to millions of people. SUEZ ENVIRONNEMENT supplies drinking water to 96.6 million people, provides wastewater treatment services for 66.3 million people and collects the waste produced by 50 million people. SUEZ ENVIRONNEMENT has 79,550 employees and, with its presence on five continents, is a world leader exclusively dedicated to water and waste

SUEZ ENVIRONNEMENT

TOUR CB21
16, PLACE DE L'IRIS
92040 PARIS LA DEFENSE CEDEX
TEL +33 (0)1 58 81 23 23
FAX +33 (0)1 58 81 25 09
WWW.SUEZ-ENVIRONNEMENT.COM



management services. In 2012, SUEZ ENVIRONNEMENT, a subsidiary in which GDF SUEZ has a 35.7% interest, generated revenues of EUR 15.1 billion.

Media Contact :

Damien Horn
Tel : +33 1 58 81 54 37
Mail : damien.horn@suez-env.com

Analysts / Investors Contact :

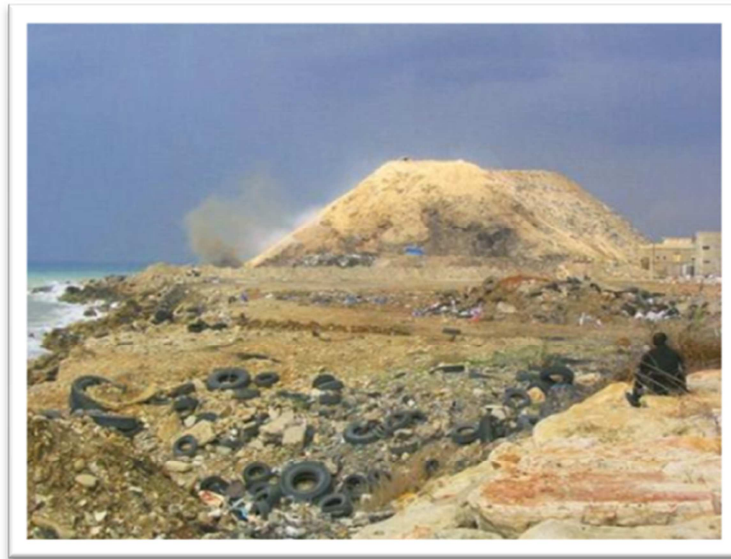
Tel : +33 1 58 81 24 95

SUEZ ENVIRONNEMENT

TOUR CB21
16, PLACE DE L'IRIS
92040 PARIS LA DEFENSE CEDEX
TEL +33 (0)1 58 81 23 23
FAX +33 (0)1 58 81 25 09
WWW.SUEZ-ENVIRONNEMENT.COM



TODAY



END OF 2015

